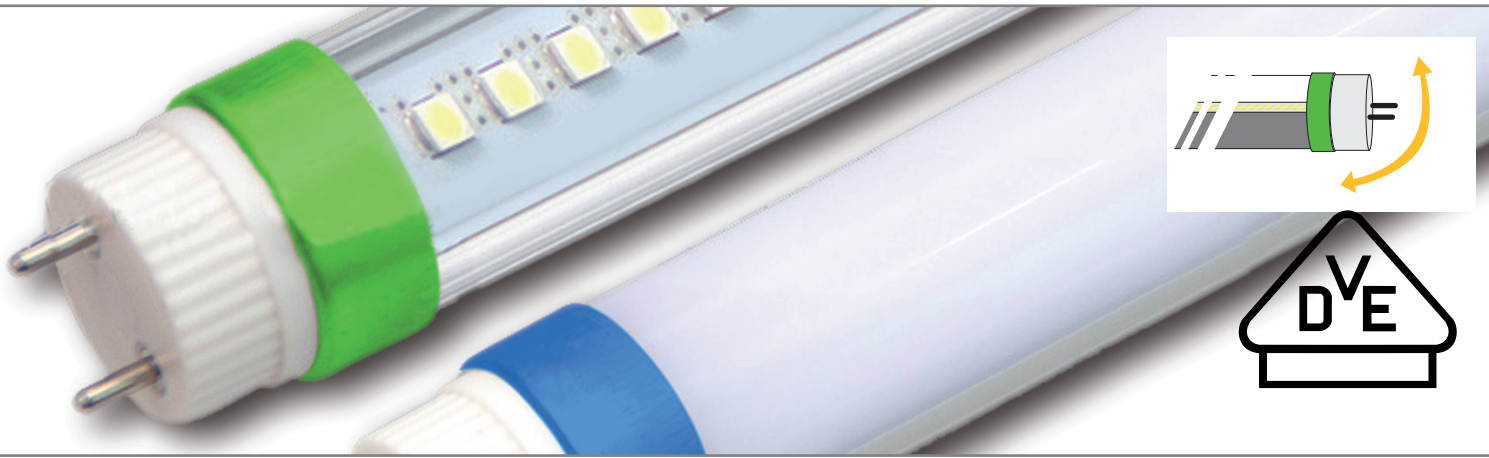




Wir sind heller®

LED Licht für Profis

LED Röhren T8 [Super Lumen]



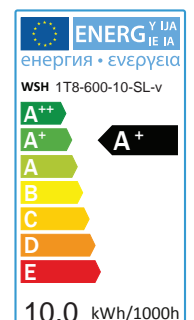
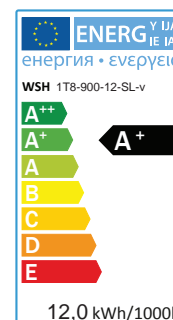
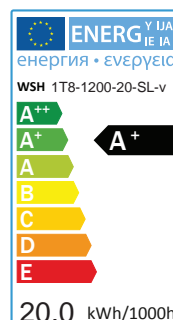
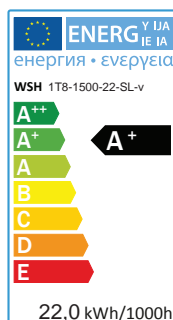
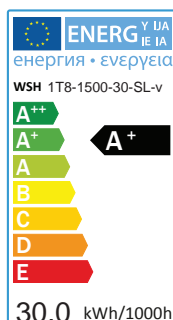
Lichtstarkes LED Röhrensystem

In der Fassung drehbar!

LED Röhren für den Einsatz in Bürogebäuden, Industriehallen, Schulen, Parkhäusern usw. Größen von 1.500 mm bis 600mm (warmweiß, neutralweiß und tageslichtweiß, klare und opale Abdeckung) machen dieses System zu einem idealen Ersatz für herkömmliche Leuchtstoffröhren. Da LED Röhren - im Gegensatz zur herkömmlichen Technologie - einseitig abstrahlen, wurden hier die Anschlüsse drehbar gestaltet. Dadurch lässt sich die Röhre in der Fassung drehen und so gezielt ausrichten.

| | | |
|-------------------------------------------------|------------------------------------|-----------------------------------------------|
| Technische Daten | Leistungsfaktor: > 0,95 | Kühlkörperfarbe: Silber, Aluminium |
| | Betriebstemperatur: -20°C bis 50°C | Abdeckung: Polycarbonat |
| | Lagertemperatur: -20°C bis 75°C | Abdeckungsfarbe: opal oder klar (Variationen) |
| Lichtdaten | LED: SMD 2835 Epistar | Maße (Ø) [mm]: Ø 26 mm |
| Farbwiedergabe [Ra]: CRI > 80 | | Normen und Standards |
| Lichtfarbe [Kelvin]: 3000K, 4500K, 5500K, 6000K | | Schutzart: IP20 |
| Abstrahlwinkel [°]: 120° | | Zertifikate: CE (TÜV), VDE, RohS |
| Elektrische Daten | Gerätespezifikationen | Lieferumfang |
| Betriebsspannung [Volt]: 220-240 V AC / 50 Hz | Ausrichtung: drehbar | Leuchtmittel: 1 |
| Dimmbar: Nein | Socket/Fassung: G13 | LED-Starter: 1 |
| Energieeffizienzklasse: A+ | Typ: T8 | Garantie: 5 Jahre |
| Lebensdauer: ca. 50.000h | Material | |
| Schaltzyklen: > 25.000 | Gehäuse: Aluminium | |
| Aufwärmzeit (60 %) [s]: < 0,50 s | Gehäusefarbe: Silber, Aluminium | |
| Dimmbar: Nein | Kühlkörper: Aluminium | |

| | 1500 mm | 1200 mm | 900 mm | 600 mm | |
|------------------------|--------------|--------------|--------------|--------------|--------------|
| Wattage | 30W | 22W | 20W | 12W | 10W |
| Anzahl LED (SMD2835) | 216 | 180 | 168 | 84 | 72 |
| Lumen klar | 3850lm | 2850lm | 2650lm | 1550lm | 1300lm |
| Lumen opal | 3600lm | 2650lm | 2450lm | 1350lm | 1200lm |
| Gewicht. Energieverbr. | 30 kWh/1000h | 22 kWh/1000h | 20 kWh/1000h | 12 kWh/1000h | 10 kWh/1000h |



WSH GmbH

DörspstraÙe 2 | 51702 Bergneustadt | Tel.: 02261 7897880 | Fax: 02261 7897881 | E-Mail: info@Wirsindheller.de | www.wirsindheller.de

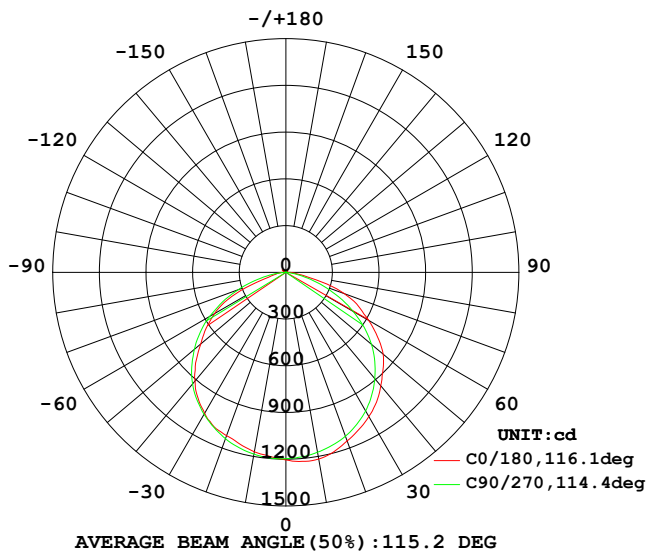
Technische Änderungen vorbehalten



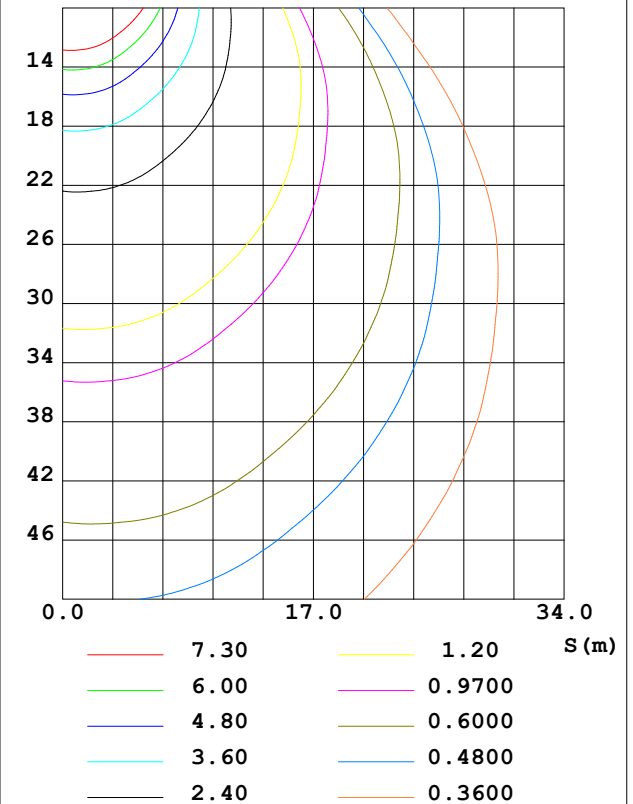
LED Röhren T8 [Super Lumen] 1500mm

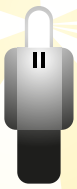
| DATA OF LAMP | | PHOTOMETRIC DATA | | | |
|-------------------|--------|------------------|--------|--------------------------|-----------|
| MODEL | | I_{max} (cd) | 1221 | S/MH (C0/180) | 1.32 |
| NOMINAL POWER (W) | 30 | LOR (%) | 100.0 | S/MH (C90/270) | 1.27 |
| RATED VOLTAGE (V) | 220 | TOTAL FLUX (lm) | 3574.1 | η UP, DN (C0-180) | 0.8, 48.9 |
| NOMINAL FLUX (lm) | 3829.1 | CIE CLASS | DIRECT | η UP, DN (C180-360) | 0.9, 49.5 |
| LAMPS INSIDE | 1 | η up (%) | 1.6 | CIBSE SHR NOM | 1.50 |
| TEST VOLTAGE (V) | 220.3 | η down (%) | 98.4 | CIBSE SHR MAX | 1.50 |

LUMINOUS INTENSITY DISTRIBUTION DIAGRAM



C0 PLANE ISOLUX DIAGRAM (UNIT: lx)

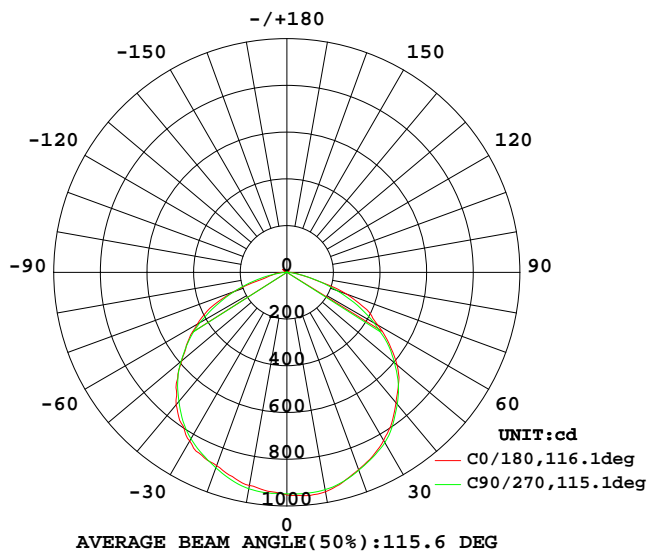




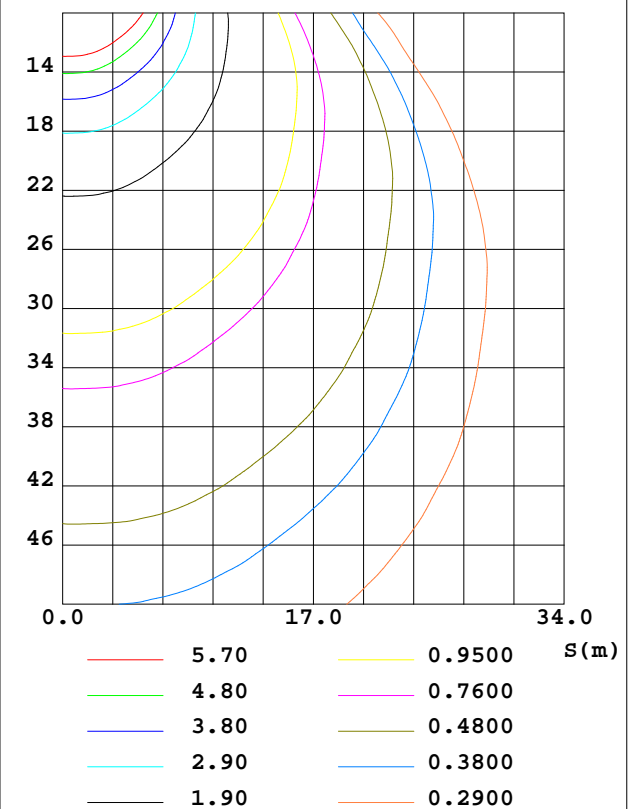
LED Röhren T8 [Super Lumen] 1500mm 22W

| DATA OF LAMP | | PHOTOMETRIC DATA | | | | Eff: 130.52 lm/W |
|------------------|---------|-----------------------|--------|--------------------|--|------------------|
| MODEL | | I _{max} (cd) | 960.1 | S/MH(C0/180) | | 1.30 |
| NOMINAL POWER(W) | 22 | LOR(%) | 100.0 | S/MH(C90/270) | | 1.31 |
| RATED VOLTAGE(V) | 220 | TOTAL FLUX(lm) | 2819.2 | η UP, DN(C0-180) | | 0.7, 49.7 |
| NOMINAL FLUX(lm) | 2819.21 | CIE CLASS | DIRECT | η UP, DN(C180-360) | | 0.8, 48.8 |
| LAMPS INSIDE | 1 | η up(%) | 1.5 | CIBSE SHR NOM | | 1.50 |
| TEST VOLTAGE(V) | 220.4 | η down(%) | 98.5 | CIBSE SHR MAX | | 1.50 |

LUMINOUS INTENSITY DISTRIBUTION DIAGRAM



C0 PLANE ISOLUX DIAGRAM (UNIT:lx)

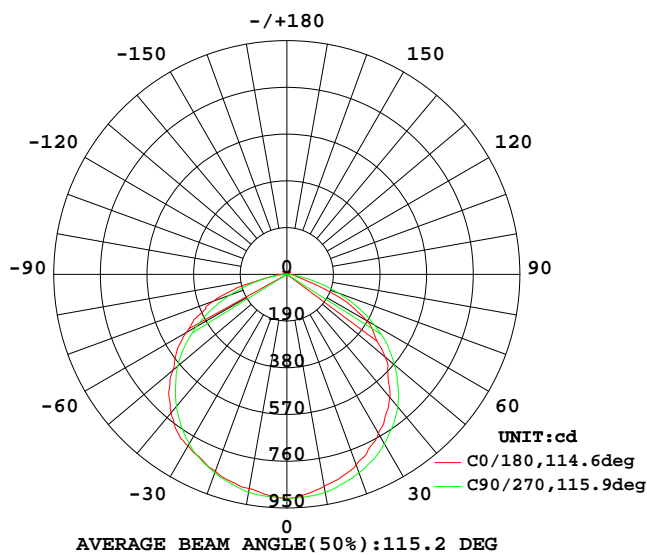




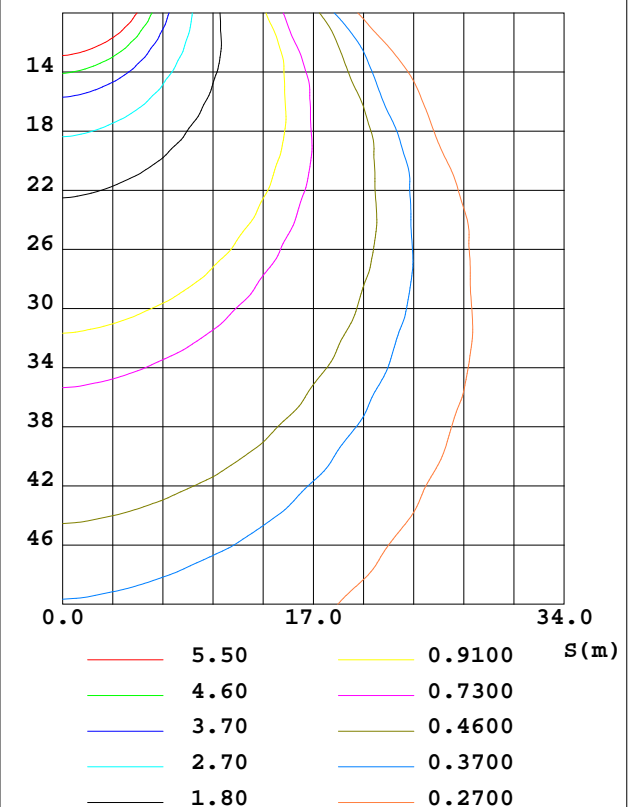
LED Röhren T8 [Super Lumen] 1200mm

| DATA OF LAMP | | PHOTOMETRIC DATA | | | | Eff: 131.00 lm/W |
|------------------|---------|-----------------------|--------|--------------------|--|------------------|
| MODEL | | I _{max} (cd) | 912.7 | S/MH(C0/180) | | 1.23 |
| NOMINAL POWER(W) | 20 | LOR(%) | 100.0 | S/MH(C90/270) | | 1.30 |
| RATED VOLTAGE(V) | 220 | TOTAL FLUX(lm) | 2659.3 | η UP, DN(C0-180) | | 0.7, 47.8 |
| NOMINAL FLUX(lm) | 2659.26 | CIE CLASS | DIRECT | η UP, DN(C180-360) | | 0.8, 50.7 |
| LAMPS INSIDE | 1 | η up(%) | 1.5 | CIBSE SHR NOM | | 1.25 |
| TEST VOLTAGE(V) | 220.3 | η down(%) | 98.5 | CIBSE SHR MAX | | 1.35 |

LUMINOUS INTENSITY DISTRIBUTION DIAGRAM



C0 PLANE ISOLUX DIAGRAM (UNIT:lx)

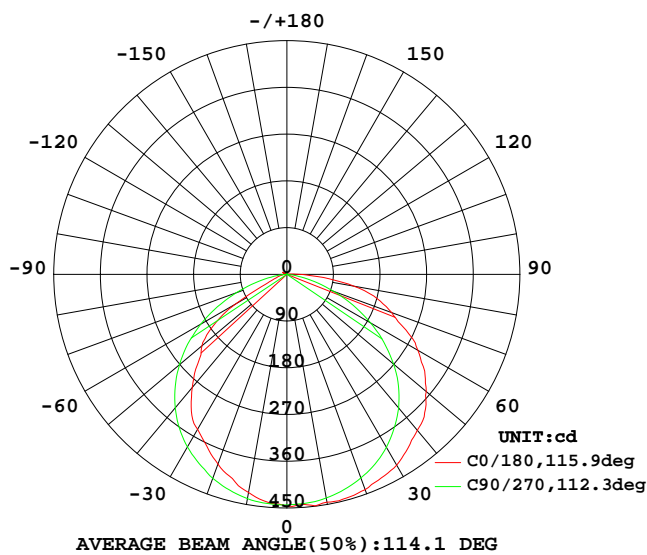




LED Röhren T8 [Super Lumen] 600mm

| DATA OF LAMP | | PHOTOMETRIC DATA Eff: 125.29 lm/W | | | |
|------------------|---------|-----------------------------------|--------|--------------------|-----------|
| MODEL | | I _{max} (cd) | 449.0 | S/MH(C0/180) | 1.41 |
| NOMINAL POWER(W) | 10 | LOR(%) | 100.0 | S/MH(C90/270) | 1.28 |
| RATED VOLTAGE(V) | 220 | TOTAL FLUX(lm) | 1315.5 | η UP, DN(C0-180) | 0.6, 52.8 |
| NOMINAL FLUX(lm) | 1315.51 | CIE CLASS | DIRECT | η UP, DN(C180-360) | 0.6, 46.0 |
| LAMPS INSIDE | 1 | η up(%) | 1.2 | CIBSE SHR NOM | 1.25 |
| TEST VOLTAGE(V) | 220.4 | η down(%) | 98.8 | CIBSE SHR MAX | 1.35 |

LUMINOUS INTENSITY DISTRIBUTION DIAGRAM



C0 PLANE ISOLUX DIAGRAM (UNIT:lx)

